

enhanced open spaces

pavers

the **KeraPave** selection of quality clay paving bricks from Crest





Red Blue KeraPave

## THE BENEFITS OF CLAY PAVERS

From ancient times, clay paving bricks have been the favourite material of 'civilised landscape designers' who appreciated the longevity and creative benefits of fired clay. Our partners Kerawil have cultivated this ancient tradition with their special firing process, which gently enhances the colours and provides a silk like finish the brick paver surface.

### Appearance

Natural clay pavers are produced without the use of artificial additives. The texture and colour have a natural character and as such blend in beautifully within its chosen location. These clay pavers are coloured throughout the brick, which is obtained through the quality controlled firing process. In time the colour intensity of brick pavers actually increases, increasing the appeal and timeless character of the environment.

### Choice

These KeraPave brick pavers are available in a variety of sizes and the KeraPave range comes in twelve different colour finishes to suit any location whilst providing Architects and Planners with a multitude of design options for paving patterns and bond styles.

### Durability & Sustainability

Clay pavers have exceptional hardness and are proven to last for hundreds of years. Clay brick paving can be re-cycled many times over and as such retain a high residual value. Paving bricks can also easily be taken up for repair work, be replaced or relocated.

### Environmentally Friendly

As mentioned above, due to their durability and longevity, clay pavers can be reused and re-cycled if required. The production of clay pavers is done in an environmentally friendly and responsible manner (including the reusing clay quarry locations). By the nature of 'open brick paving' this ensures there is sufficient aeration and allows water to filter into the subsoil, which is also a benefit in green areas.

### Maintenance

KeraPave clay pavers need little if any maintenance. Clay paving bricks are resistant to weather conditions such as frost and are not as susceptible to the rigours of modern day environmental elements such as oil, petrol, rubber, dirt and grit.



Platinum Grey KeraPave





# Welcome to Crest

## Natural Clay Paving

Within these pages we are delighted to present our KeraPave range of clay paving bricks. This collection has been developed specifically for the UK market with our partners Kerawil, a family run factory who like ourselves pride themselves on their quality of product and understand that service and customer care is their lifeblood.

Having a well established and experienced team here at Crest, we are always pleased to share our knowledge with our customers. So please don't hesitate to pick up the phone or drop us an email if you have any specific or bespoke requirements where we might be able to help.

Within this brochure you will find 12 types of clay paving bricks. These are available in a wide range of sizes and formats, the details of which you will find on the inside back cover. Our pavers are not just what we have here in the KaraPave range, we also have other clay paving bricks and can offer bespoke solutions and matching service if you require this.

With all orders we are able to offer a fast and efficient nationwide distribution service to all corners of the British Isles and Ireland.

Should you not find what you are looking for here or on our website or you just require a little more information and advice, then please do not hesitate to contact us on **01430 432667**.

You are also welcome to visit our showroom where you can see our inspiring range of Bricks, Blocks and Roofing Tiles first hand.

Thanks for considering Crest Pavers, we hope that we can be of service to you.



*Caramel KeraPave*





▶ **Autumn Multi**



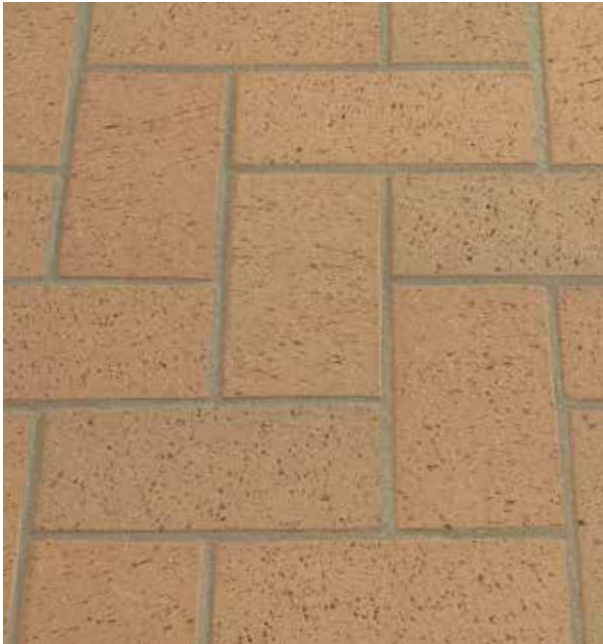
▶ **Caramel Brown**



▶ **Red Blue**



▶ **Caramel**



▶ **Russet Red**



▶ **Blue Brown**





▶ **Dark Brown**



▶ **Blue Grey Multi**



▶ **Burnt Red Multi**



▶ **Platinum Grey**



▶ **Brown**



▶ **Black**





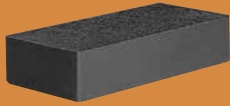


*Blue Brown KeraPave*



*Top: Caramel Brown from the KeraTique range    Below: Red Blue KeraPave*

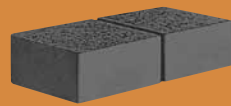
## Clay Pavers



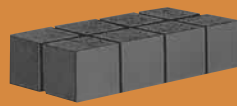
**DFP/RFP/NFP/SFP80**  
Length: 240 mm  
Width: 118 mm  
Depth: 52/63/71/80 mm  
Available with or without chamfer



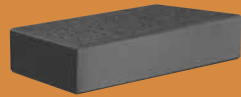
**Standard Paver**  
Length: 200 mm  
Width: 100 mm  
Depth: 45/52/63/71/80/100 mm  
Available with or without chamfer



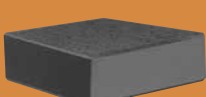
**Cleave Cobble bricks (half)**  
Length: 240 mm  
Width: 118 mm  
Length: 200 mm  
Width: 100 mm  
Depth: 52/63/71/80 mm



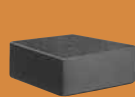
**Cleave Cobble bricks (small)**  
Length: 240 mm  
Width: 118 mm  
Depth: 52/63 mm



**Special format SFP3015**  
Length: 300 mm  
Width: 150 mm  
Depth: 52/63 mm with Chamfer



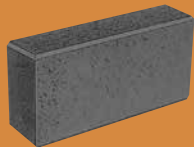
**Square paver SFP 2052/63**  
Length: 200 mm  
Width: 200 mm  
Depth: 52/63 mm  
Available with or without chamfer edge



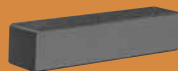
**Half paving bricks DEZI**  
Length: 100 mm  
Width: 100 mm  
Depth: 52/63/71/80 mm  
Available with or without chamfer edge



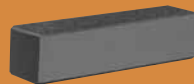
**Half paving bricks DFP/RFP/NFP/SFP80**  
Length: 118 mm  
Width: 118 mm  
Depth: 52/63/71/80 mm  
Available with or without chamfer edge



**Laid tall side up DFP/RFP/NFP/SFP**  
Length: 240 mm  
Width: 118 mm  
Depth: 52/63/71/80 mm  
glatt oder geschält / Smooth finish?

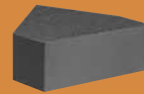


**Riegel 200 Dezi**  
Length: 200 mm  
Width: 52/63/71/80 mm  
Depth: 52/63/71/80 mm  
Available with or without chamfer edge

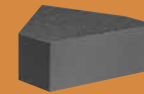


**Riegel 240**  
Length: 240 mm  
Width: 52/63/71/80 mm  
Depth: 52/63/71/80 mm

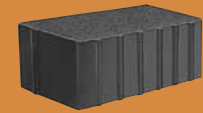
## Special Pavers



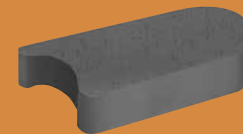
**Mitred brick (200 x 100):**  
100 x 100 x 141 mm  
D: 52/63/71/80 mm



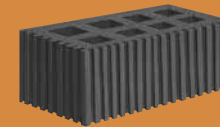
**Mitred brick (240 x 118):**  
**DFP/RFP/NFP/SFP:**  
118 x 118 x 167 mm  
D: 52/63/71/80 mm



**Spacer - all formats on request**



**Lawn mowing edge**  
L: 300 x W: 150 x D: 52 mm  
with no chamfer

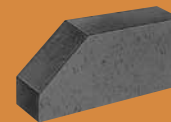


**Under Lawn brick**  
L: 240 x W: 120 x D: 105 mm  
with no chamfer

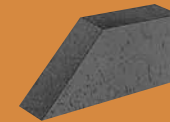


**Drainage brick**  
L: 240 W: 118  
D: 52/63/71/80 mm  
with chamfer

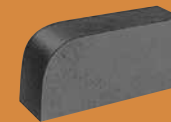
## Bullnose & Cants for kerbs/steps



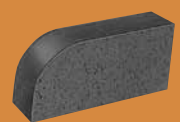
**Cant Nr. 1**  
L: 240 mm x W: 118 mm  
D: 80/71/63/52 mm



**Cant Nr. 2**  
L: 240 mm x W: 118 mm  
D: 80/71/63/52 mm



**Bullnose Nr. 3**  
L: 240 mm x W: 118 mm  
D: 80/71/63/52 mm  
L: 200 mm x W: 100 mm  
x D: 52 mm



**Bullnose Nr. 4**  
L: 240 mm x W: 118 mm  
D: 80/71/63/52 mm

*all with no chamfer*

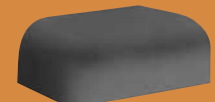
## Hand Moulded Paving Bricks



**Corner 1 Sided round**  
L: 240 mm x W: 118 mm



**Corner 2 Sided round**  
L: 240 mm x W: 118 mm



**Corner paver brick**  
L: 240 mm x W: 118 mm

*Other shapes and formats on request*





*Platinum Grey*



*Red Blue*



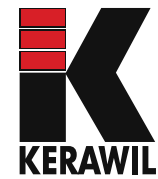
*Blue Grey multi*



*Burnt Red Multi*



*Caramel*



**KERAWIL**

**THE CLAY PAVER**



tel 01430 432667

fax 01430 433000

email [info@crest-bst.co.uk](mailto:info@crest-bst.co.uk)

Howdenshire Way Howden East Yorkshire DN14 7HZ